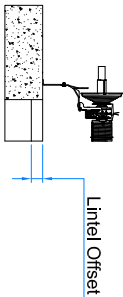


SECTION B-B (1 : 30)



SECTION C-C (1 : 20)

Installation frame	
Material	Width b (minimum)
Steel	70 mm while t > 2mm
Wood	70 mm while t > 100mm
Stone/Concrete	70 mm while t > 100mm
t = Material thickness	

Required free space for the door above the opening, includes the whole marked area above the opening.

Required free space around the door guiding.

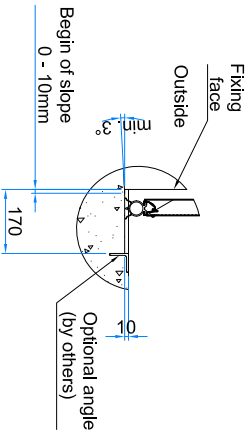
*Power supply for operator

- 1) Alternative 1
- Phase, 230V 10 amp (CEE wall socket or isolator switch) to be located within 0,5 m from the operator (by others)
- 2) Alternative 2 (if S then power-supply to CU)
- Phase, 230 V 10 amp (CEE wall socket or Isolator switch) to be located adjacent to the control unit (by others)

**Minimum Side space per side	
Operator mounted	Side space
None	110
Operator - no ICH***	311
Operator + ICH	351
CDMB	280

*** ICH: Integrated Chain Hoist on Operator

NOTE:
Levelled threshold not recommended
To reduce possible water ingress apply:
a) 10mm height difference
or
b) slope min. 3°



THRESHOLD DETAIL D (1 : 10)

Contact										
Pos	Quantity	Day light width	Day light height	Headroom	Depth	Side space left	Side space right	Track angle (deg)	Lintel Offset <input type="checkbox"/> None <input type="checkbox"/> 40 mm <input type="checkbox"/> 60 mm	
Quote / Order Number						Project:				
Date						Notes:				
Drawn by										
B		9753	CHD - HARDWARE NAME		2017-12-22	DE	ML			
Rev.	No.	AN No.	Revision		Date	Drawn	Appr.			

Drawn	Appr.	Dimensions without specified tolerances refer to: Valid at date of latest rev.		Scale	File	Size
TV	PD					A2
ARCHITECT/BUILD. PREP.						
OHSD-42-VL (witho. beam)						
ELECTRICAL SIDE OPER.						
Status	AN No.	Date				
P	9561	2016-01-21				
Drawing No.	K067908	Rev.	B			