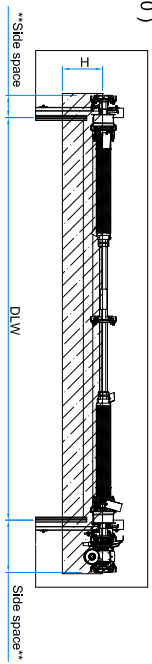
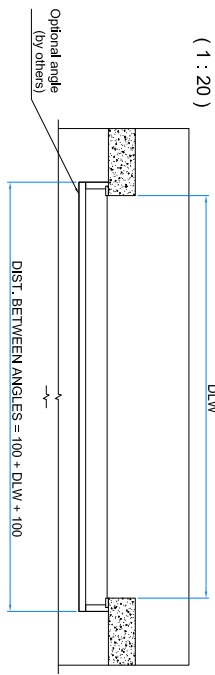


This drawing will remain our property. The drawing must not without our knowledge, neither in original or any altered shape, be copied or multiplied, shown to or in any other respect made known to third parties nor be used for production. Transgression will be prosecuted according to existing law.

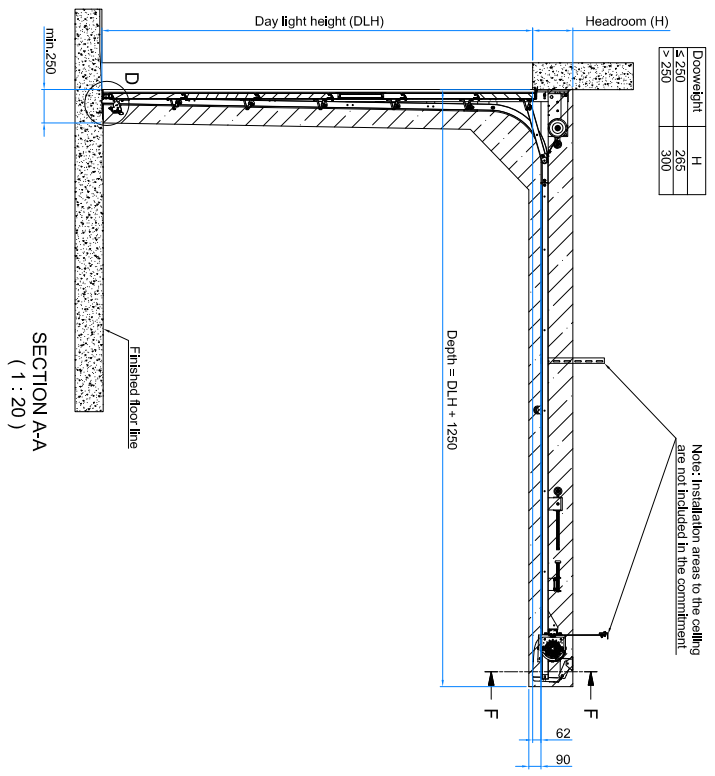
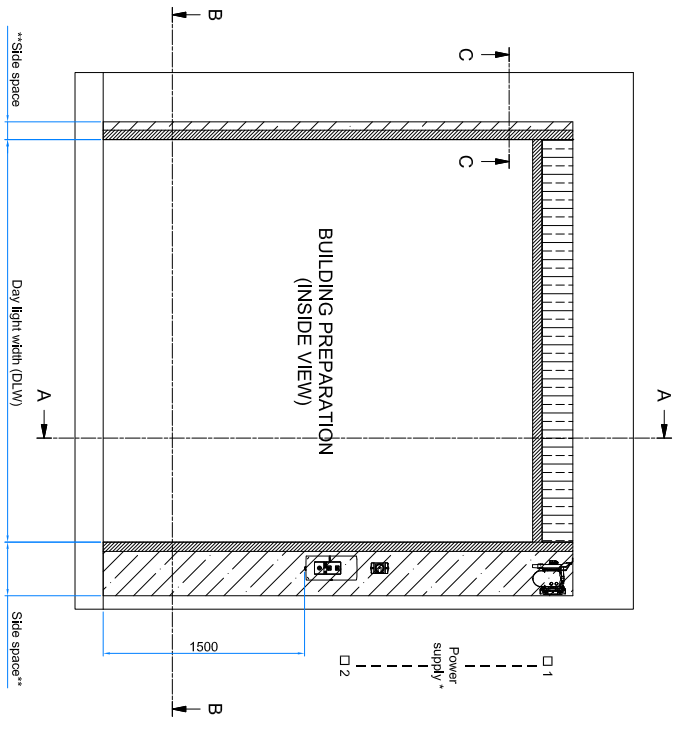
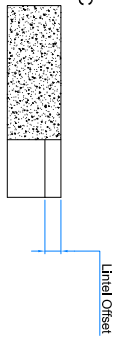
SECTION F-F
(1 : 20)



SECTION B-B
(1 : 20)

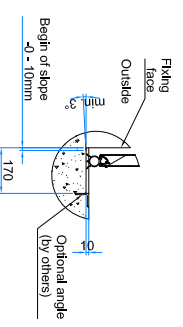


SECTION C-C
(1 : 10)



SECTION A-A
(1 : 20)

THRESHOLD DETAIL D (1 : 10)



NOTE:
Leveled threshold not recommended
To reduce possible water ingress apply:
a) 10mm height difference
b) slope min. 3°

**Minimum side space per side	
Operator mounted	Side space ~ 132 / 165
Operator - no ICH	304 / 351
Operator + ICH **	344 / 391

ICH: Integrated Chain Hoist on Operator
 ~ ~ Values without / with Outer Support Bearing.
 (Outer support bearing is mounted in case Doorweight > 350kg or DLW > 6000)

- *Power supply for operator**
- 1) Alternative 1
- Phase: 230V 10 amp (CEE wall socket or isolator switch) to be located within 0.5 m from the operator (by others)
 - 2) Alternative 2
- Phase: 230 V 10 amp (CEE wall socket or isolator switch) to be located adjacent to the control unit (by others)

- Installation frame, integrated in or securely fixed to the building.
- Required free space for the door above the opening. Includes the whole marked area above the opening.
- Required free space around the door guiding.

Material	Installation frame	Width b (minimum)
Steel	70 mm while 1 > 2mm	
Wood	70 mm while 1 > 10mm	
Stone/Concrete	170 mm while 1 > 100mm	
	1 = Material thickness	

Contact		Day light width		Day light height		Headroom		Depth		Side space left		Side space right		Track angle (deg)		Lintel Offset	
Pos	Quantity															<input type="checkbox"/> 40 mm <input type="checkbox"/> 60 mm <input type="checkbox"/> None	
Quote / Order Number																	
Project:																	
Notes:																	
Date		Drawn by		Date		Drawn by		Date		Drawn by		Date		Drawn by		Date	
D	9753	CHG	HARDWARE NAME	2017-12-21	DE	ML											
Rev.	No.	Rev.	No.	Rev.	No.	Rev.	No.	Rev.	No.	Rev.	No.	Rev.	No.	Rev.	No.	Rev.	No.

Drawn	Author	Dimension without requested tolerances refer to:	Scale	Proj.	Size
PD	BV	UNLESS STATED OTHERWISE	1:1	ARCHITECT/BUILD- PREP.	A1
OHSD-42 - LL					
ELECTRICAL SIDE OPER.					
Sheet No.	Rev.	Date	Drawn by	Rev.	Date
P	9513	2014-11-14	K067906	D	